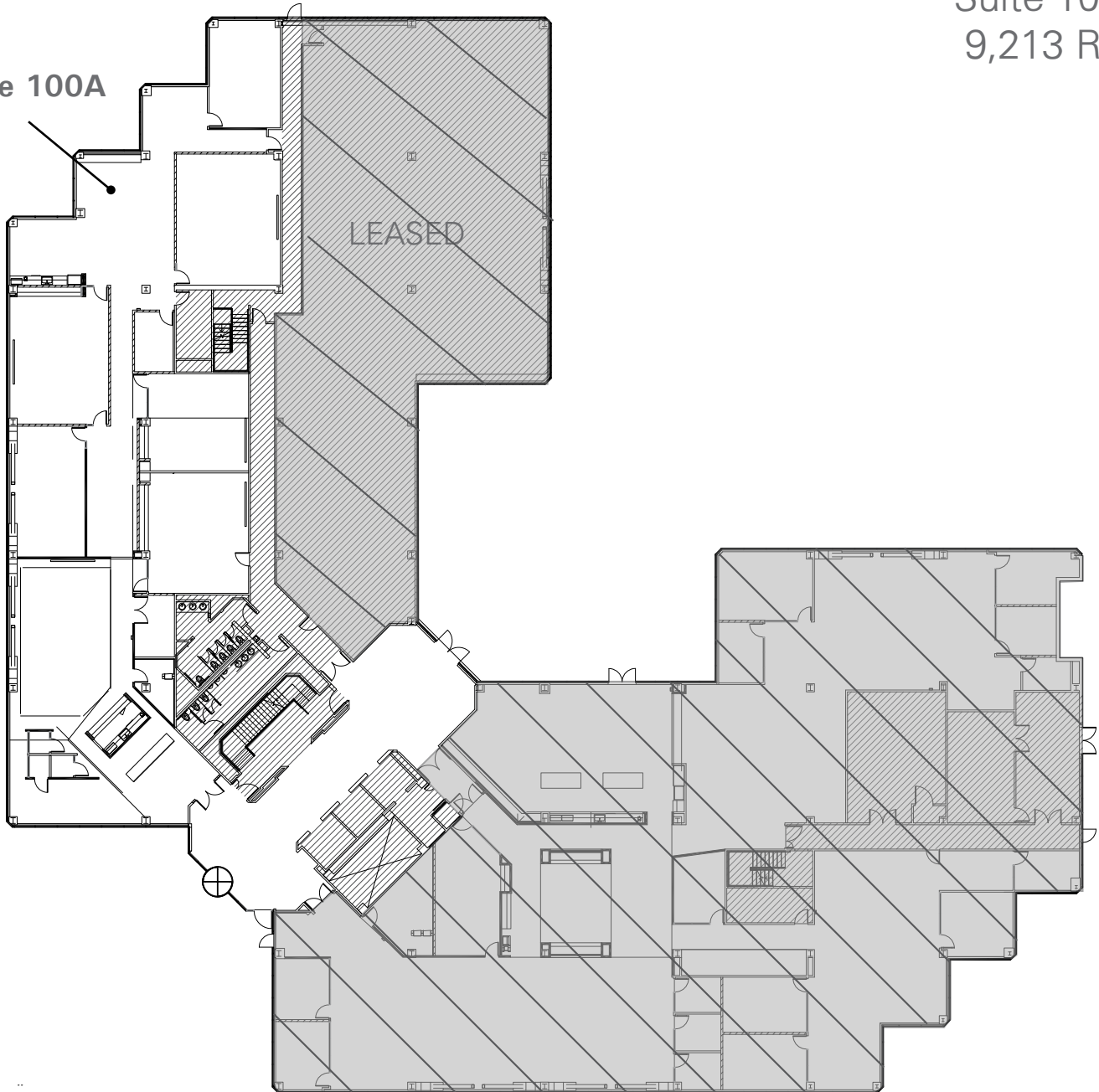


Suite 100A



FOR LEASING INFORMATION:

Trent Barmby

+1 925 944 2151

trent.barmby@jll.com

RE Lic. #: 01837549

Kevin Mechelke

+ 1 925 944 2142

kevin.mechelke@jll.com

RE Lic. #: 01338917

Francisco Torres

+1 510 213 3580

francisco.torres@jll.com

RE Lic. #: 02031635

Knute Bucklew

+1 925 586 7880

knute.bucklew@jll.com

RE Lic. #: 01332731

