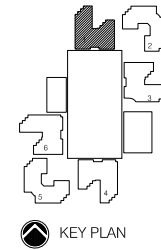
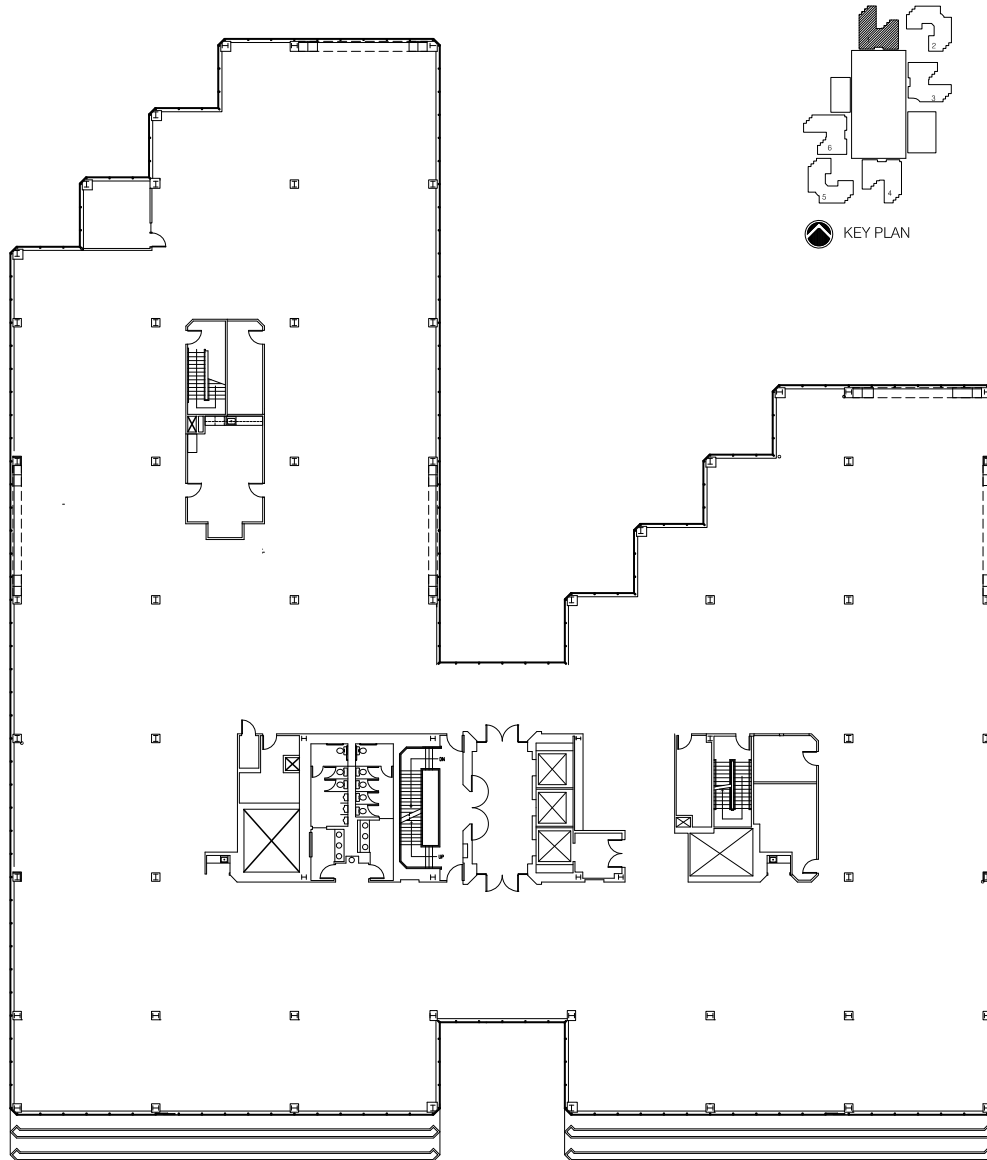




Bldg. 1
(4410)
 4th Floor
 38,601RSF
 (divisible down to 10,000 RSF)



FOR LEASING INFORMATION:

Trent Barmby +1 925 944 2151 trent.barmby@jll.com RE Lic. #: 01837549	Kevin Mechelke + 1 925 944 2142 kevin.mechelke@jll.com RE Lic. #: 01338917	Francisco Torres +1 510 213 3580 francisco.torres@jll.com RE Lic. #: 02031635	Knute Bucklew +1 925 586 7880 knute.bucklew@jll.com RE Lic. #: 01332731
--	---	--	--



Although information has been obtained from sources deemed reliable, neither Owner nor JLL makes any guarantees, warranties or representations, express or implied, as to the completeness or accuracy as to the information contained herein. Any projections, opinions, assumptions or estimates used are for example only. There may be differences between projected and actual results, and those differences may be material. The Property may be withdrawn without notice. Neither Owner nor JLL accepts any liability for any loss or damage suffered by any party resulting from reliance on this information. If the recipient of this information has signed a confidentiality agreement regarding this matter, this information is subject to the terms of that agreement. ©2022. Jones Lang LaSalle IP, Inc. All rights reserved. Jones Lang LaSalle Brokerage, Inc. Real Estate License #: 01856260